

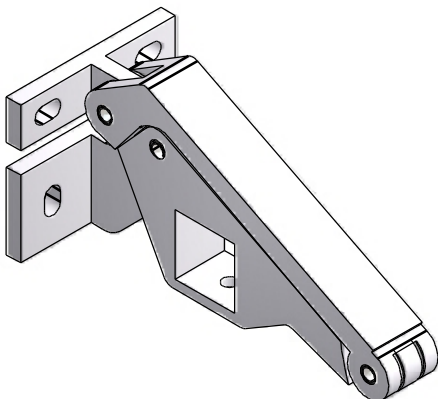
# FOLDING OPENER FABRICATORS MANUAL

## INDEX

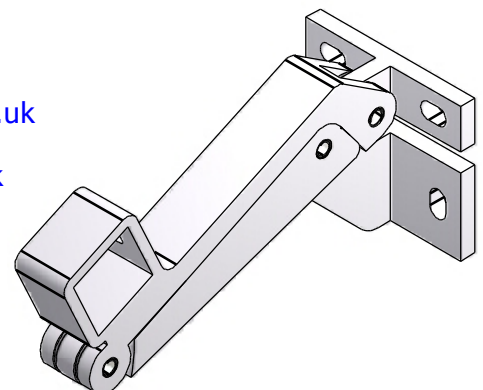
Key features	1
Introduction	2
Fixing Details	2
Key Features	3
Model Options	3
Applications Data	4
Heavy Duty Extended Openers	5
Accessories	6
Accessories	7
Operation Of High Level Openers	8
Specials	9
Link Arms	10
Anchor Insert Application Details	11
Standard Window Matrix	12
Hopper Window Matrix	13
Universal Folding Opener	14
Availability	15
Trouble Shooting Guide	16

## KEY FEATURES

- GIVES SECURE LOCKING AND CONTROLLED VENTILATION IN ONE SIMPLE OPERATION.
- IDEAL FOR USE IN SCHOOLS, HOSPITALS, OFFICES, HOTELS, RESIDENTIAL HOMES, AND SHELTERED HOUSING.
- CAN BE FITTED TO MOST TIMBER, PVC-U, ALUMINIUM, STEEL, AND COMPOSITE WINDOWS.
- AVAILABLE IN LOCKABLE FOLD-ASIDE OR RELEASABLE VARIATIONS.
- ANODISED OR PAINT FINISH OPTIONS

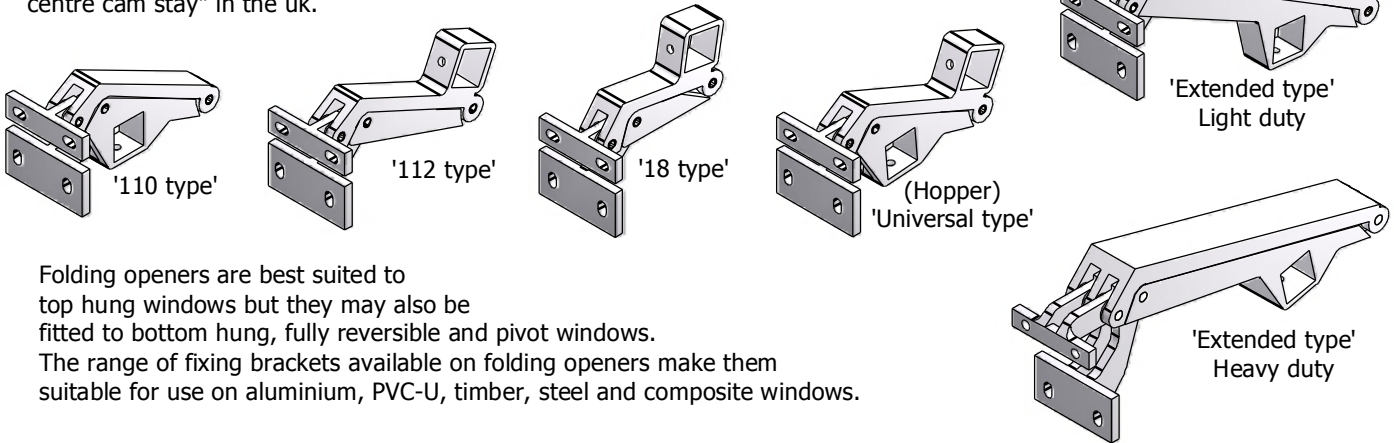


Tel. 01789 414044  
Fax. 01789 415273  
Email: [info@buildingprofiles.co.uk](mailto:info@buildingprofiles.co.uk)  
Web: [www.buildingprofiles.co.uk](http://www.buildingprofiles.co.uk)



# Introduction To Folding Openers

BPL's range of folding openers are the premier "over centre cam stay" in the uk.

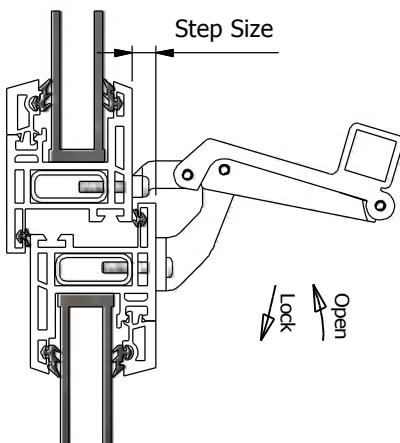


Folding openers are best suited to top hung windows but they may also be fitted to bottom hung, fully reversible and pivot windows. The range of fixing brackets available on folding openers make them suitable for use on aluminium, PVC-U, timber, steel and composite windows.

## FIXING DETAILS

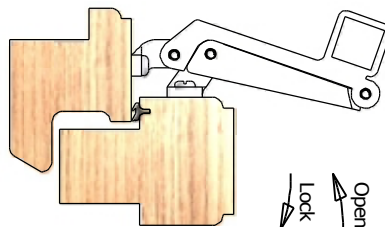
### PVC-U Windows

When using PVC-U windows, always fix into reinforcement



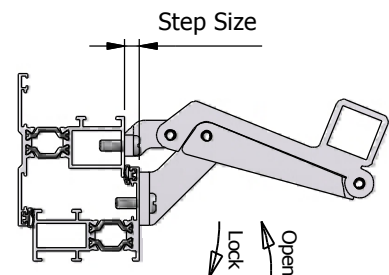
### Timber Windows

When using timber windows, do not fit too close to edges of profile. Doing so may cause the timber to split. (1" min. length screws must be used).

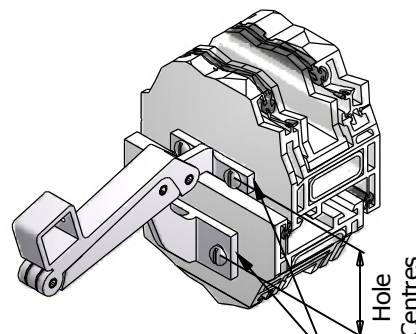


### Aluminium Windows

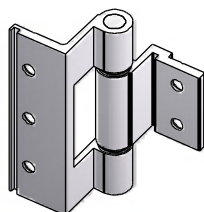
When using aluminium windows, only use recommended fixings. (check with systems company if in doubt).



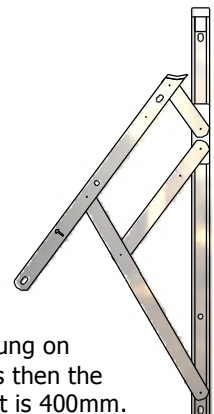
When fixing folding openers to windows the hole centres should be correct to the specification of opener being used. The sash bracket & frame bracket should be in line & square. When fitting tandem bars the folding openers should be square & in line with each other.



When a sash is hung on butt hinges the minimum sash height should be no less than 250mm

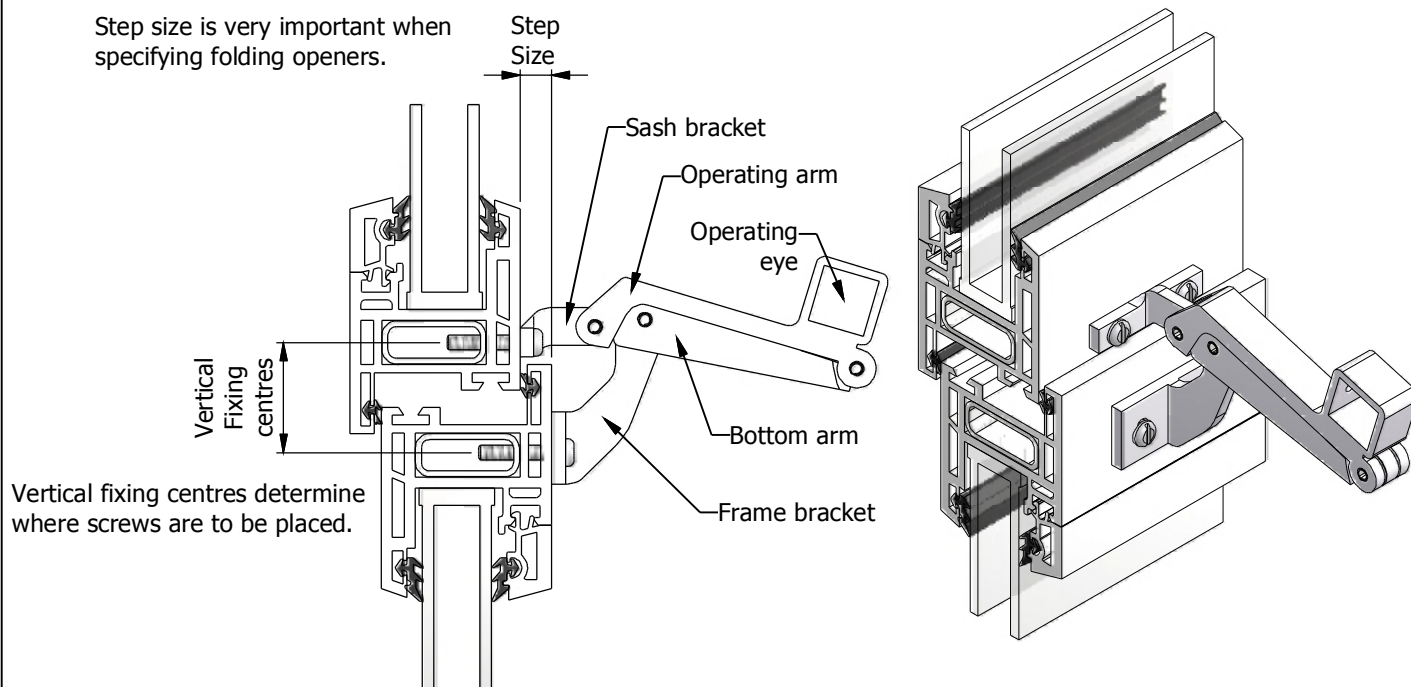


If the sash is hung on friction stay hinges then the minimum sash height is 400mm.



All of the information shown on this data sheet was correct at the time of issue. All information however is subject to change and therefore it is advisable to check with Building Profiles to ensure that you have the latest issue level.

## Key Features



## Model Options & Finish Options

The simplicity of use and robustness of folding openers make them particularly suitable for schools, hospitals, offices, care homes and sheltered housing.

Folding openers can be linked in pairs or a triple to accommodate different window widths and certain types can be operated at high level by using a tandem eye and pole operator.

The two standard types of folding opener give a sash movement of 150mm (112 & 110 types). If a greater window opening is required then an extended folding opener is available. This gives a sash movement of 315mm. If a smaller opening is required then a shorter folding opener is available. The 18 type folding openers give a sash movement of 100mm.

Sash Movement	Folding Opener
100mm	18 Type
150mm	110 & 112 Type
315mm	Extended

All folding openers are available in locking and/or releasable form and range are also available in fold aside form

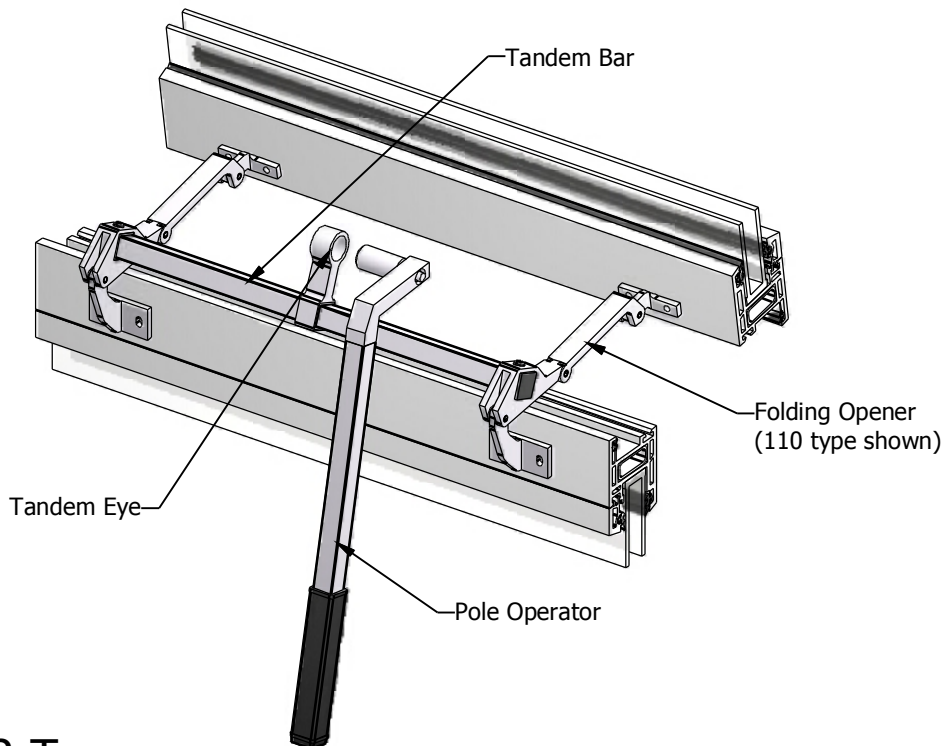
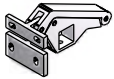
The standard finish for all folding openers and accessories is silver anodised (AA15). Colour anodising and colour powder coated finishes are also available.

All of the information shown on this data sheet was correct at the time of issue. All information however is subject to change and therefore it is advisable to check with Building Profiles to ensure that you have the latest issue level.

# Applications Data

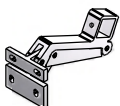
## 110 Type

The action of the 110 type folding opener allows the operating eye to remain inside the building even when the window is fully open. This is therefore ideal where pole operation is required. Hand operation of these folding openers is not recommended especially when linked. The geometry of these folding openers means there is a chance that fingers could become trapped. When using a 110 type on a hopper (bottom hung) window a minimum of 85mm must be left above the top arm of the folding opener, this allows the folding opener to snap up.



## 112 Type

The action of the 112 type folding opener ensures that the operating eye and tandem bar do not interfere with internal cill boards. The position of its operating eye gives an extended arc of operation making it ideal for hand operation.

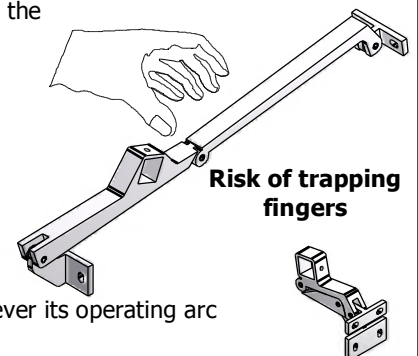
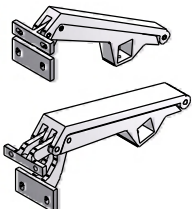


## Extended Light & Heavy Duty

The operation of extended folding openers is easiest when linked with a tandem bar. If they are to be used singularly then an operating handle must be used.

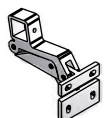
When the extended folding opener is closed the tandem eye drops below the level of sash, therefore there is a chance that fingers could become trapped if a tandem bar or operating handle is not used.

Extended folding openers are not ideal for high level pole operation.



## 18 Type

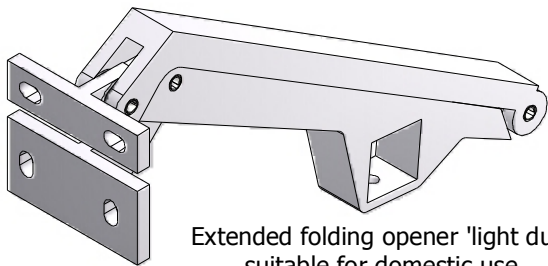
The 18 type folding opener is similar to the 112 type folding opener however its operating arc is smaller.



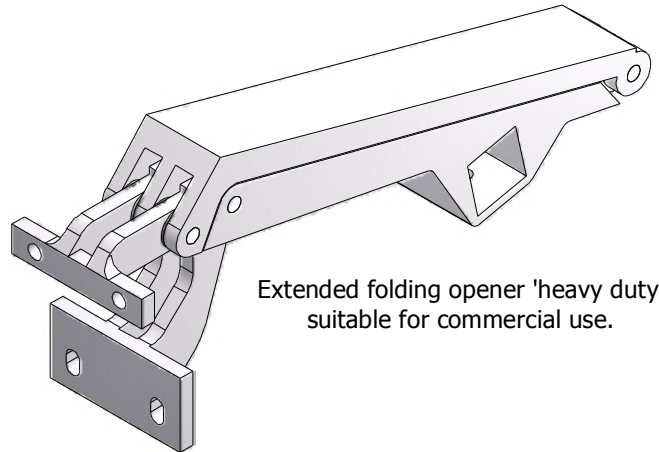
All of the information shown on this data sheet was correct at the time of issue. All information however is subject to change and therefore it is advisable to check with Building Profiles to ensure that you have the latest issue level.

Telephone 01789 414044

## Heavy Duty Extended Folding Openers



Extended folding opener 'light duty'  
suitable for domestic use.



Extended folding opener 'heavy duty'  
suitable for commercial use.

### Extended Folding Openers

The extended folding openers are designed for windows that need an extra wide opening. Giving a throw of 315mm from the closed position they are ideal for extra ventilation.

Heavy duty extended folding openers for commercial use are suited to places like schools, offices, factories, & anywhere that they may come under more robust use. This is down to it's 3 knuckle design which gives additional strength.

As stated earlier in the manual extended folding openers are easier used with a tandem bar or operating handle. Due to the position of the operating eye & the throw of the window, tandem eyes can be difficult to reach & are not recommended for high level use (out of hands reach). Also if the window has a cill this must be taken into account due to the drop of the operating arms when in the closed position, the operating arms could clash with the cill.

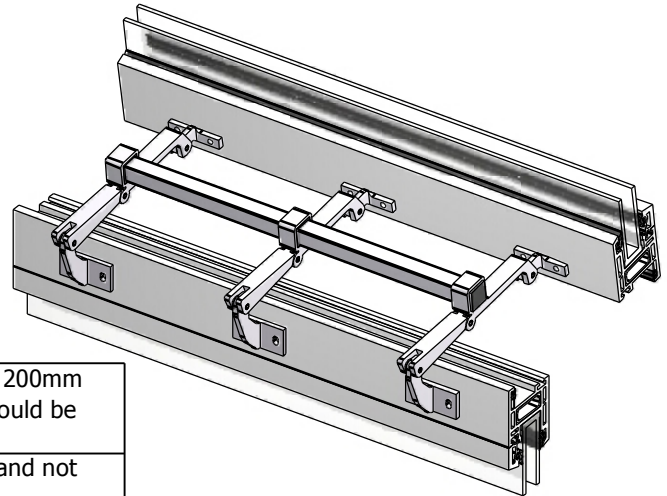
Heavy duty extended folding openers come in satin anodised & hipca white finishes. Other finishes can be supplied, please check with technical or customer services.

All heavy duty extended folding openers come in the step size and vertical hole centre bracket set ups as the light duty extended folding openers. See the folding opener quick reference matrix for the range of bracket set ups available.

The part numbers are the same apart from the Letters 'HD', added to the number e.g. 12107 extended folding opener ref would be 121HD07.

All of the information shown on this data sheet was correct at the time of issue.  
All information however is subject to change and therefore it is advisable to check  
with Building Profiles to ensure that you have the latest issue level.

## Accessories



### Tandem Bars

**Tandem bars range in length from 200mm to 4000mm depending on the width of window.** When using tandem bars it is important to follow the following set of rules:-

1	Folding openers must be positioned between 100mm and 200mm from the corner of the sash. The tandem bar therefore should be 200mm to 400mm less than the width of the window.
2	Tandem bar lengths are always specified by hole centres and not overall length
3	The maximum distance between linked folding openers should not exceed 900mm. If a 1000mm length tandem bar is required then a third folding opener must be used.
4	If possible length of tandem bars should be rounded up or down to the nearest 100mm increment (i.e. 500,600....800....etc.
5	When a third folding opener is used a tandem bar with a centre hole can be supplied.
6	If a fourth folding opener is required a tandem bar will be supplied with no centre holes for the inner two folding openers.

### Formulae For Tandem Bar Lengths

**Formulae for tandem bar lengths:  $x = \text{Sash width} - 300$  (round up or down to the nearest 100mm).**

$x = 0\text{mm to } 400\text{mm}$	$x = 401\text{mm to } 900\text{mm}$	$x = 901\text{mm to } 1800\text{mm}$	$x = 1801\text{mm to } 2700\text{mm}$	$x = 2701 \text{ plus}$
1 opener	2 openers	3 openers	4 openers	Contact Technical

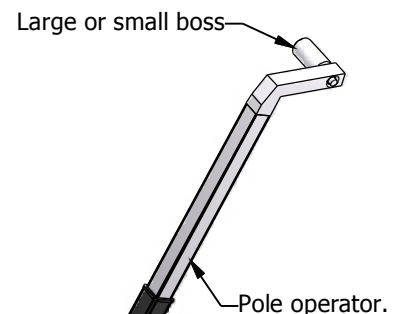
### Pole Operators

**The standard length of pole operators is 1400mm.** Longer or shorter pole operators are available on request. The length of pole operators rounded up or down to the nearest 100mm increment.

Pole operators are supplied with either a large or small boss depending on the style of tandem eye being used (**small boss required for single folding openers**).

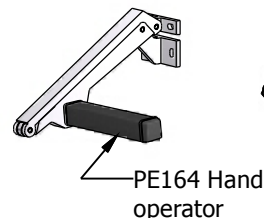
Part No **283041400** = small boss (Ø18mm) with 1400mm long pole operator.

Part No **283061400** = large boss (Ø21.5mm) with 1400mm long pole operator.



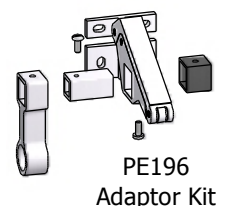
### Hand Operator

The hand operator comes in one standard size and will fit any folding opener (where no tandem bar is fitted). The part number is PE164.



### Tandem Eye Adaptor Kit

The PE196 tandem eye adaptor is for use where a 263 tandem eye is required on a single folding opener. The kit includes the tandem eye, adaptor bar, end cap, & screw fixings.



All of the information shown on this data sheet was correct at the time of issue. All information however is subject to change and therefore it is advisable to check with Building Profiles to ensure that you have the latest issue level.



## Tandem Eyes

## Accessories

Pole operation of a single folding opener does not normally require a tandem eye.

However, when linked by a tandem bar and pole operation is necessary then a tandem eye is required.

The tandem eye should be fitted either centrally (in the case of two folding openers) or immediately to the side of the central folding opener (in the case of three folding openers).

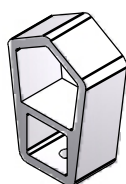
Three types of tandem eyes are available and the recommended fitting positions are shown below.

Tandem eye kits include two end caps & three self tapping screws.

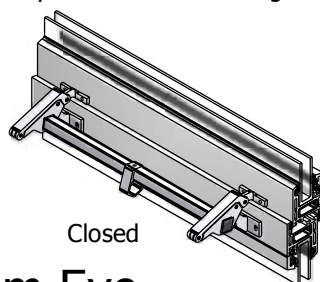
Any alternatives to the fitting positions shown below should be fully tested before installation.

### 260 Tandem Eye

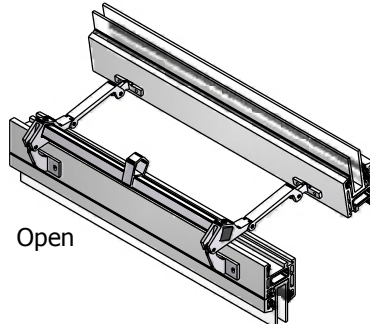
The 260 tandem eye is generally used on the 110 type folding openers. It should be operated with a small boss pole operator. This tandem eye is best suited to high level with a cill board.



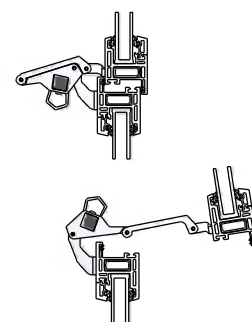
260  
Tandem  
Eye



Closed



Open



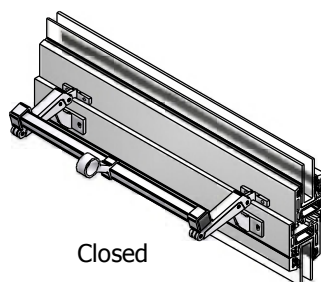
### 262 Tandem Eye

The 262 tandem eye is especially suited to the 112 type folding openers where an extended operating arc is required.

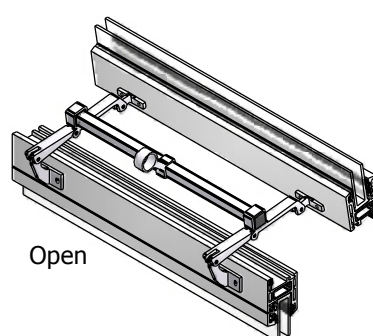
Whilst the 112 type folding openers are not ideal for pole operation there may be applications where a tandem eye is required i.e just out of hands reach. If a pole operation of a 112 type folding opener is planned then testing must take place prior to installation. The 262 tandem eye should be operated with a large boss pole operator.



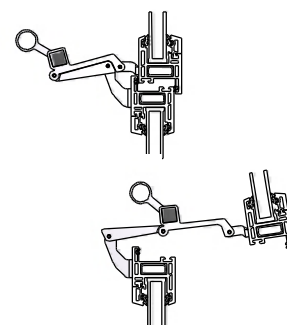
262  
Tandem  
Eye



Closed



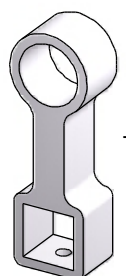
Open



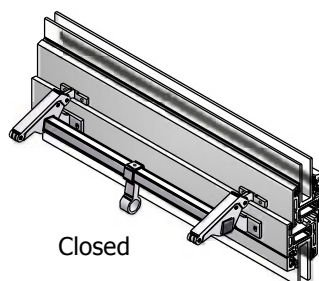
### 263 Tandem Eye

The 263 tandem eye is generally used on the 110 type folding openers to give an extended operating arc.

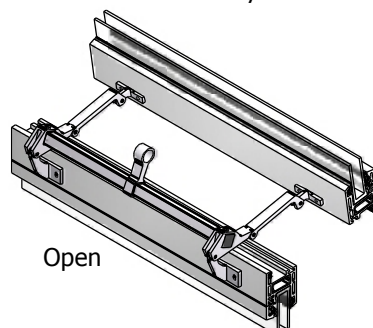
It should be operated with a small boss pole operator. If this folding opener is to be used at high level with a cill board then note that clearance must be accounted for. In this case 260 tandem eye can be used.



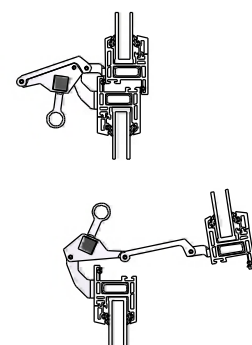
263  
Tandem  
Eye



Closed



Open



**Packers** - Vent bracket packers are available to accommodate intermediate step sizes.

3 Sizes are available **2.0mm (24012) 3.0mm (24022) & 5.0mm (23124)**

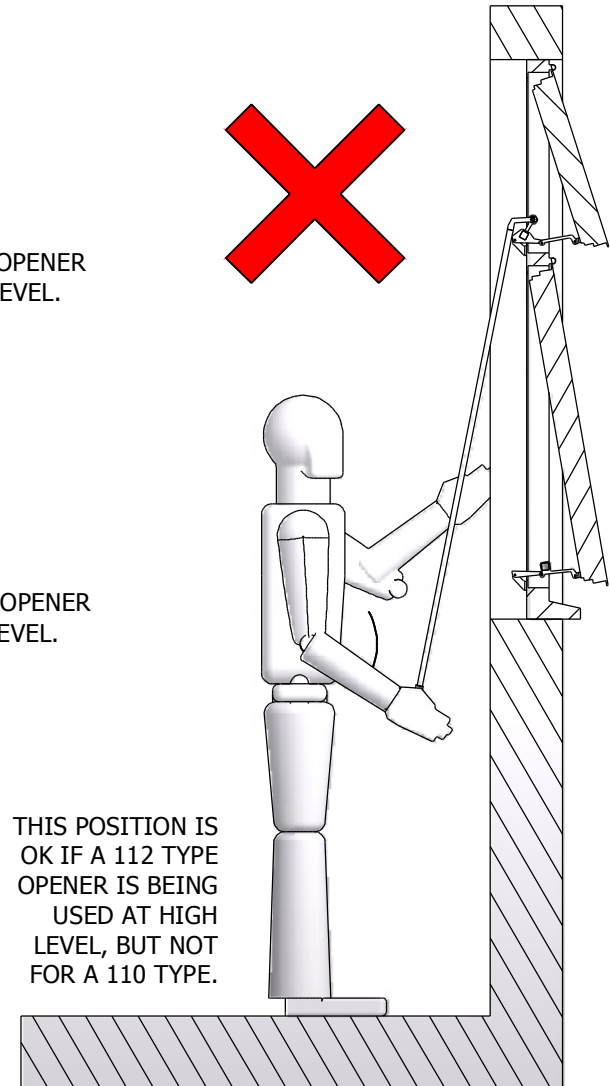
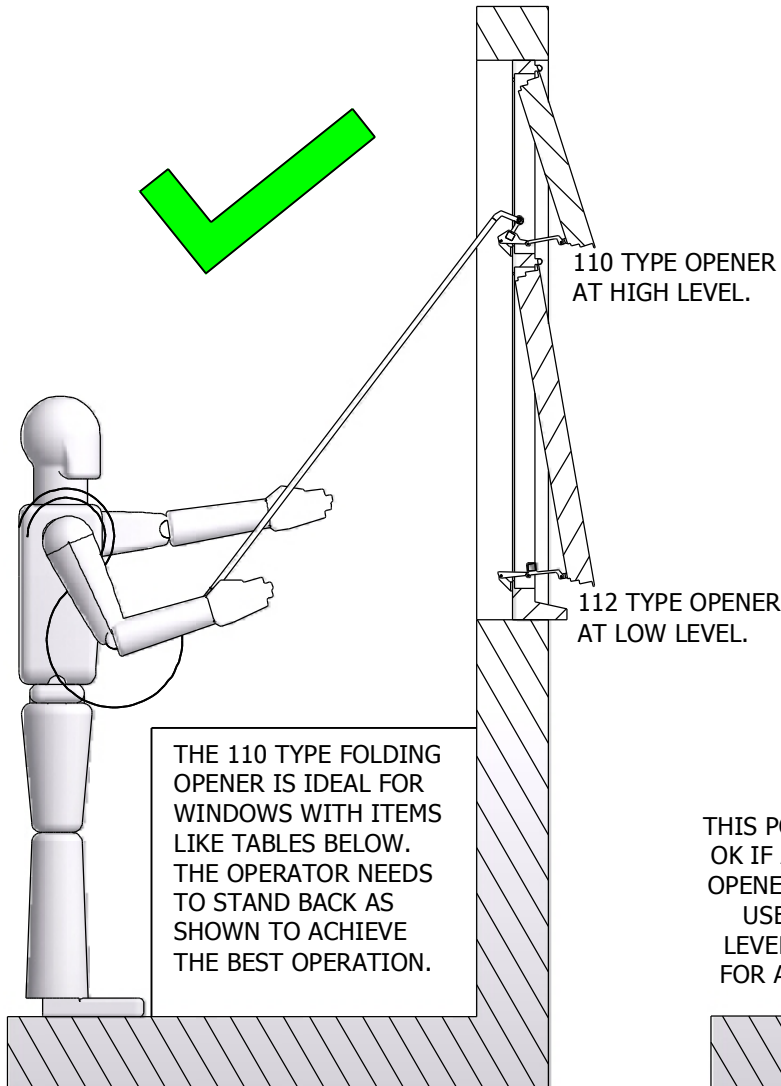
2.0mm & 3.0mm are aluminium and the 5.0mm is moulded black nylon.

**Frame bracket packers** are also available in a **5.0mm step (23102)** aluminium.

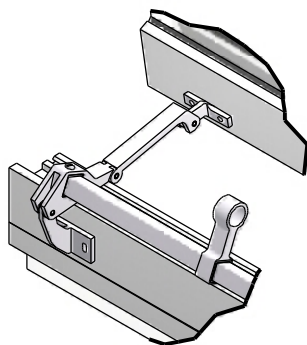
All of the information shown on this data sheet was correct at the time of issue.  
All information however is subject to change and therefore it is advisable to check  
with Building Profiles to ensure that you have the latest issue level.

# Operation Of High Level Folding Openers

When using high level operation please ensure the correct standing position.

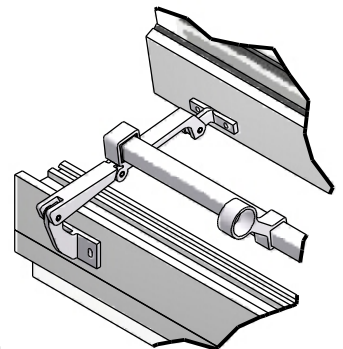


110 Type folding opener is designed for high level use. Due to the design of this opener it is much easier to operate with a pole operator. As the diagrams above show the ideal operating position is to stand away from the window. This allows items like tables to be below the window.



110 type opener.

112 Type folding opener is designed for low level hand operation, (same as 18 type & extended). BPL always recommend the 110 type folding opener for use at high level. If a 110 type folding opener can not be used then a trial fit of 112 type must take place to establish the suitability of a 112 in situ. If a 112 type opener has to be used the operator has to stand close to the window & move the opener in an arc motion.



112 type opener.

All of the information shown on this data sheet was correct at the time of issue. All information however is subject to change and therefore it is advisable to check with Building Profiles to ensure that you have the latest issue level.

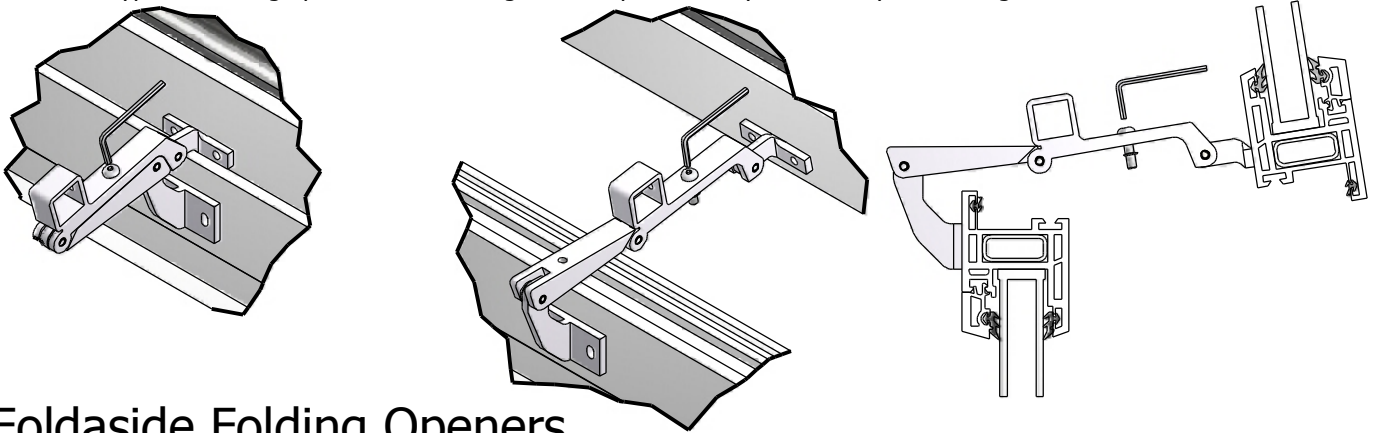


## Specials

All folding openers are available in locking and/or releasable format. A range is also available in fold aside format. Some folding openers are also available with a combination of different options.i.e Lockable & Releasable.

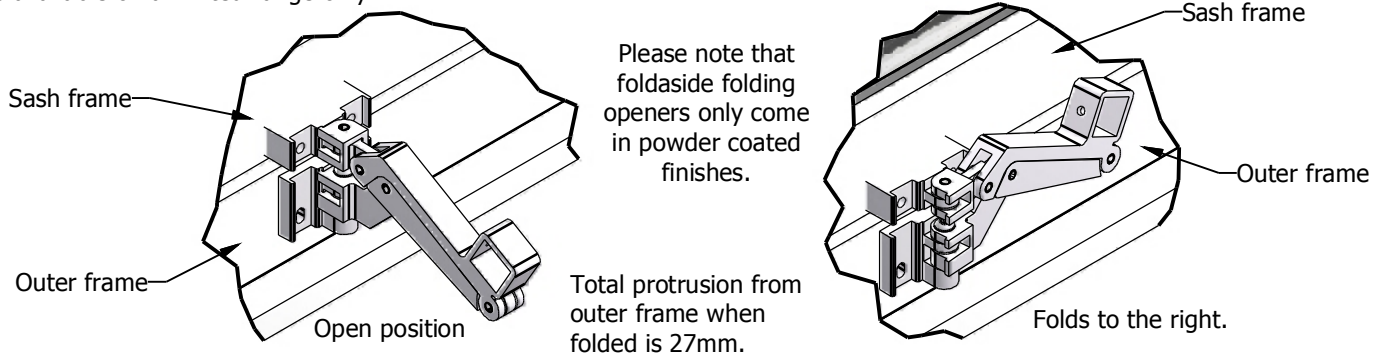
### Lockable Folding Openers

The lockable variation is operated by the use of a hexagonal key which prevents unauthorised opening. It can be fitted to all types of folding openers. The locking screw is permanently retained by a retaining washer.



### Foldaside Folding Openers

The foldaside folding openers are designed to fold back against the frame. Some of the clamping pressure on the sash maybe relieved when folding the opener aside and therefore it is recommended that when foldaside folding openers are used a bubble seal should be fitted to ensure a sufficient seal compression is achieved. It is ideally suited for the eye level windows, windows where blinds are fitted and inside secondary glazed windows. The foldaside option is available on a limited range only.

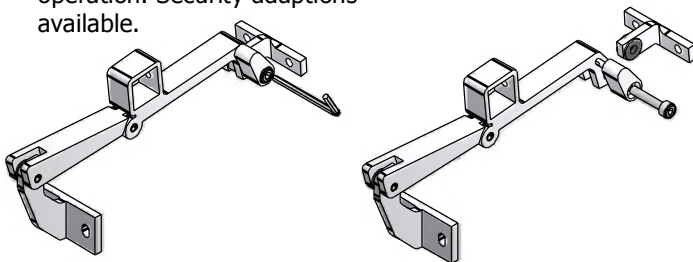


### Releasable Folding Openers.

The releasable option can be incorporated into the 110 type, 112 type and the 18 type of folding openers. It can also be used in conjunction with the lockable version. The releasable option offers restricted opening of windows (casement, horizontal pivot and fully reversible) with a release facility for cleaning by authorised persons.

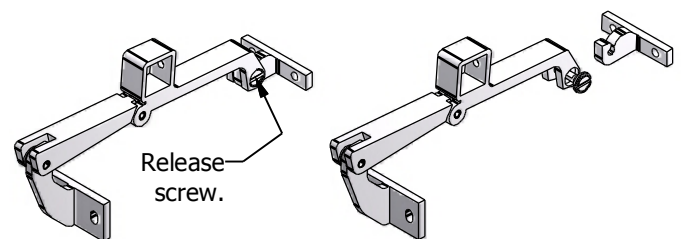
#### Standard Release

Released by conventional allen key operation. Security adaptations available.



#### Quick-Release

Released by a coin or square edged house hold tool. Spring loaded snap action re-engagement.



All of the information shown on this data sheet was correct at the time of issue. All information however is subject to change and therefore it is advisable to check with Building Profiles to ensure that you have the latest issue level.

Telephone 01789 414044

# Link Arm Folding Opener Quick Reference Matrix

DIM A	BODY STYLE	DIM B	REF.
20MM	112	23MM	113L023
31MM	110	23MM	111L023
31MM	112	23MM	112L023
31MM	18	47MM	184L047
35MM	112	23MM	117L023
45MM	110	23MM	131L023
45MM	112	23MM	130L023
45MM	112	44MM	130L044
45MM	18	23MM	185L023
53MM	110	23MM	191L023
53MM	110	26MM	191L026
53MM	112	23MM	190L023
53MM	112	26MM	190L026
53MM	18	26MM	187L026
53MM	18	44MM	187L044

## Notes

Different step sizes are available depending on quantities.

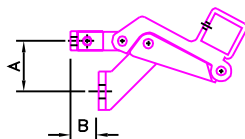
Link Arm Folding openers are available in locking and releasable or in a combination of both.

For further information please contact 01789 414044

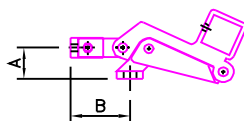
## Available Styles

### 18 STYLES

185L023, 187L044, 187L026

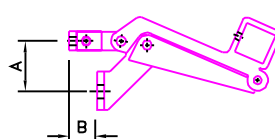


184L047

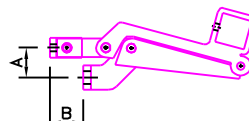


### 112 STYLES

117L023, 190L023, 130L023, 112L023, 130L044, 190L026

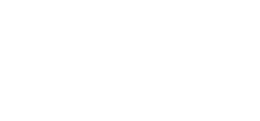
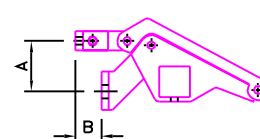


113L023



### 110 STYLES

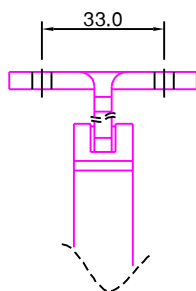
111L023, 191L023, 191L026, 131L023



## IMPORTANT APPLICATION NOTES

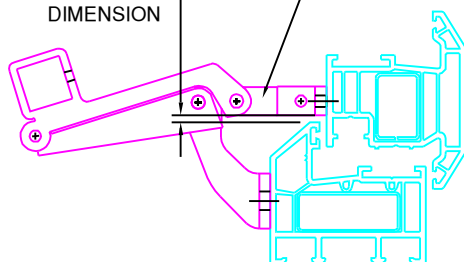
- If possible applications requiring link arm folding openers should be trial fitted on a window before ordering bulk.
- Care must be taken to ensure that the rear of the link arm does not clash on the cill especially when moving to the open position (please refer to DIM Y).
- The length of the link arm and the window height will determine the size of the DIM X required.
- For further information please refer to Building Profiles

HORIZONTAL  
FIXING  
CENTRES  
ON ALL  
FOLDING  
OPENERS  
ARE 33.0mm.

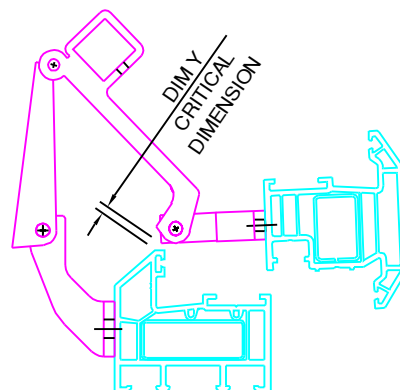


DIM X  
CRITICAL  
DIMENSION

Link Arm



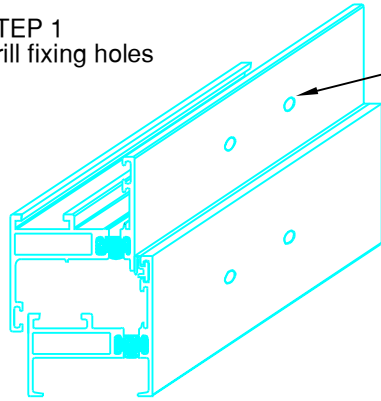
DIM Y  
CRITICAL  
DIMENSION



Telephone 01789 414044

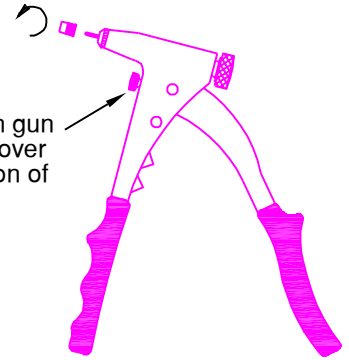
# Rivet Nut insert application detail for Aluminium windows

**STEP 1**  
Drill fixing holes



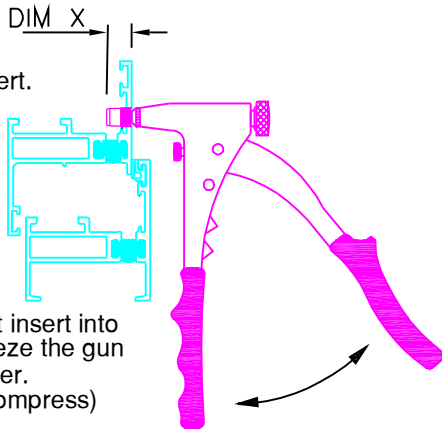
Drill 4 holes & Counter sink  
(See chart below)

**STEP 2**  
Screw insert onto gun.



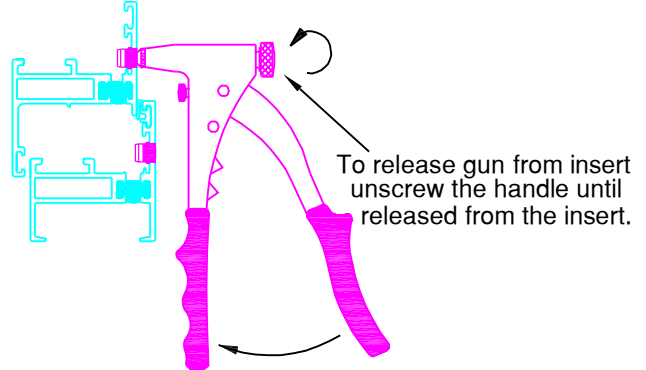
Set stop on gun  
to prevent over  
compression of  
insert.

**STEP 3**  
Compress insert.



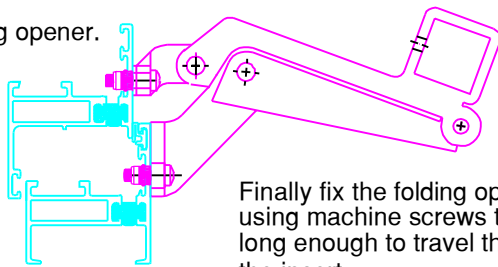
Push Rivet Nut insert into  
hole and squeeze the gun  
handles together.  
(Do not over compress)

**STEP 4**  
Release gun from insert.



To release gun from insert  
unscrew the handle until  
released from the insert.

**STEP 5**  
Fix folding opener.



Finally fix the folding opener  
using machine screws that are  
long enough to travel through  
the insert.

Screws must be DIM X + component thickness minimum.

Rivet Nut					Insert tool
Thread size	Hole size	Material thickness	DIM X	PFL Part No	PFL Part No
	Ø6.0 & Counter sink Ø7.0 @ 90°	0.25 - 3.0	12.0	RNS4SH	
M5	Ø7.0 & Counter sink Ø8.0 @ 90°	0.25 - 3.0	12.5	RNS5SH	
M6	Ø9.0 & Counter sink Ø10.0 @ 90°	0.25 - 3.5	15.5	RNS6SH	

Supplier details for inserts and  
tools:

Primary Fasteners Limited  
PO Box 10571  
Shirley  
Solihull

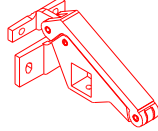
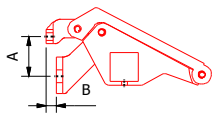
B90 9WP

TEL: 0121 247 5191  
FAX: 0121 535 7094  
Email: [mailroom@prifast.co.uk](mailto:mailroom@prifast.co.uk)  
[www.prifast.co.uk](http://www.prifast.co.uk)

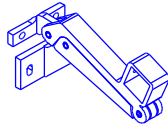
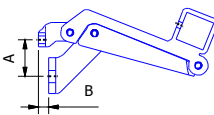
Telephone 01789 414044

## Folding Opener Quick Reference Matrix

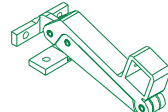
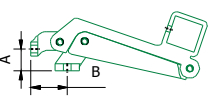
110, 111, 115, 122, 123, 131 & 191 type



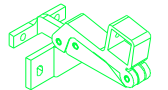
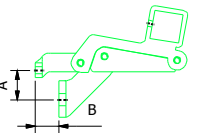
112, 113, 116, 117, 130 & 190 type



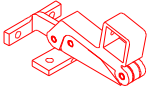
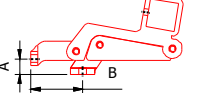
114 & 118 type



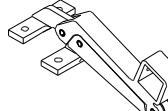
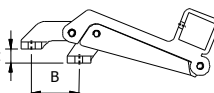
180, 181, 183, 185 & 187 type



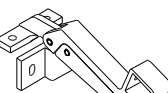
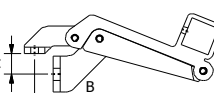
182 & 184 type



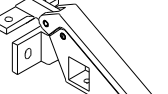
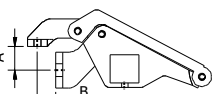
114IG, 118IG & 182IG type



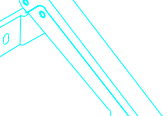
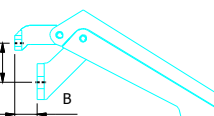
112IG, 113IG, 117IG, 130IG, 180IG & 181IG type



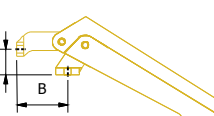
110IG type



120, 121, 124, 126 & 129 type



125 & 128 type



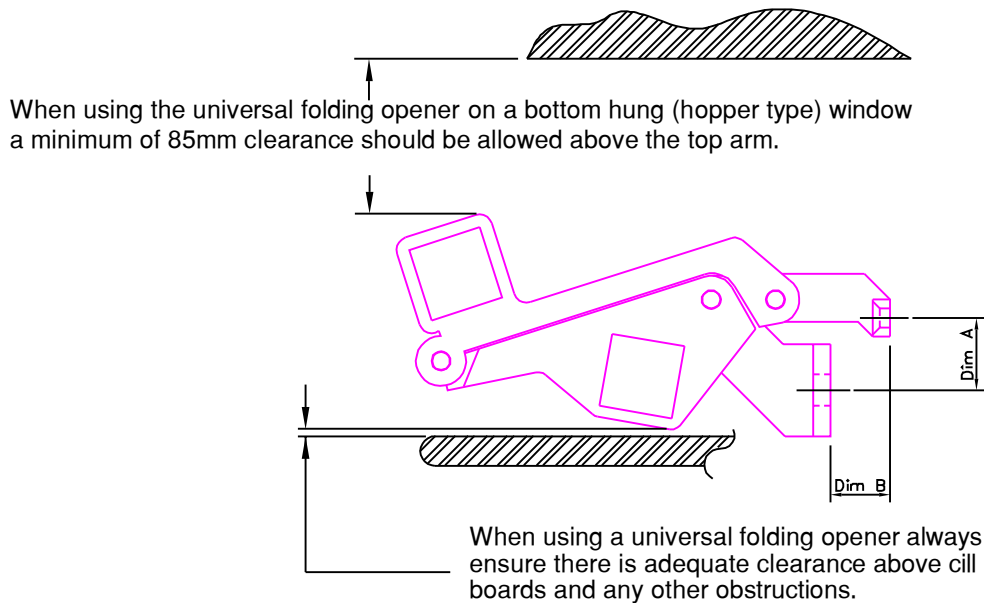
STYLE	DIM A	REF.	DIM B	REF.	DIM B	REF.	DIM B	REF.	DIM B	REF.	DIM B
110	25mm	11100	FLUSH								
111	25mm			11105	5mm	11107	7mm	11111	11mm	11116	16mm
112	25mm	11200	FLUSH	11205	5mm	11207	7mm	11211	11mm	11216	16mm
113	20mm	11300	FLUSH								
113	15mm			11305	5mm	11307	7mm	11311	11mm	11316	16mm
114	15mm	11400	19mm	11405	24mm	11407	26mm	11411	30mm	11416	35mm
115	20mm	11500	FLUSH	11505	5mm	11507	7mm	11511	11mm	11516	16mm
116	20mm	11600	FLUSH	11605	5mm	11607	7mm	11611	11mm	11616	16mm
117	35mm	11700	FLUSH								
117	32mm			11705	5mm	11707	7mm	11711	11mm	11716	16mm
118	25mm	11800	19mm	11805	24mm	11807	26mm	11811	30mm	11816	35mm
120	20mm			12005	5mm	12007	7mm	12011	11mm	12016	16mm
121	25mm			12105	5mm	12107	7mm	12111	11mm	12116	16mm
122	15mm			12205	5mm	12207	7mm	12211	11mm	12216	16mm
123	30mm			12305	5mm	12307	7mm	12311	11mm	12316	16mm
124	30mm	12400	FLUSH	12405	5mm	12407	7mm	12411	11mm	12416	16mm
125	15mm	12500	19mm	12505	24mm	12507	26mm	12511	30mm	12516	35mm
126	38mm			12605	5mm	12607	7mm	12611	11mm	12616	16mm
128	25mm	12800	19mm	12805	24mm	12807	26mm	12811	30mm	12816	35mm
129	48mm			12905	5mm	12907	7mm	12911	11mm	12916	16mm
130	45mm	13000	FLUSH								
130	38mm			13005	5mm	13007	7mm	13011	11mm	13016	16mm
131	45mm	13100	FLUSH								
131	38mm			13105	5mm	13107	7mm	13111	11mm	13116	16mm
180	25mm	18000	FLUSH	18005	5mm	18007	7mm	18011	11mm	18016	16mm
181	20mm	18100	FLUSH								
181	15mm			18105	5mm	18107	7mm	18111	11mm	18116	16mm
182	15mm	18200	19mm	18205	24mm	18207	26mm	18211	30mm	18216	35mm
183	35mm	18300	FLUSH								
183	32mm			18305	5mm	18307	7mm	18311	11mm	18316	16mm
184	25mm	18400	19mm	18405	24mm	18407	26mm	18411	30mm	18416	35mm
185	45mm	18500	FLUSH								
185	38mm			18505	5mm	18507	7mm	18511	11mm	18516	16mm
187	53mm	18700	FLUSH								
187	48mm			18705	5mm	18707	7mm	18711	11mm	18716	16mm
190	53mm	19000	FLUSH								
190	48mm			19005	5mm	19007	7mm	19011	11mm	19016	16mm
191	53mm	19100	FLUSH								
191	48mm			19105	5mm	19107	7mm	19111	11mm	19116	16mm
Internal Glaze	15mm	110IG	11mm								
Internal Glaze	16mm	112IG	13mm								
Internal Glaze	9mm	113IG	13mm								
Internal Glaze	11mm	114IG	34mm								
Internal Glaze	25mm	117IG	13mm								
Internal Glaze	22mm	118IG	34mm								
Internal Glaze	11mm	127IG	34mm								
Internal Glaze	34mm	130IG	13mm								
Internal Glaze	13mm	180IG	13mm								
Internal Glaze	8mm	181IG	13mm								
Internal Glaze	8mm	182IG	34mm								

Folding openers are available in locking, releasable and/or fold aside form. Link arm folding openers are available for some step sizes over 16mm  
For further information please contact Building Profiles

All of the information shown on this data sheet was correct at the time of issue.  
All information however is subject to change and therefore it is advisable to check  
with Building Profiles to ensure that you have the latest issue level.

Telephone 01789 414044

## Universal Folding Opener Quick Reference Matrix



STYLE	DIM A	REF.	DIM B	REF.	DIM B	REF.	DIM B	REF.	DIM B	REF.	DIM B
110	20mm	11000U	FLUSH	11005U	5mm	11007U	7mm	11011U	11mm	11016U	16mm
112	25mm	11200U	FLUSH	11205U	5mm	11207U	7mm	11211U	11mm	11216U	16mm
113	15mm	11300U	FLUSH	11305U	5mm	11307U	7mm	11311U	11mm	11316U	16mm
116	25mm	11600U	FLUSH								
116	20mm			11605U	5mm	11607U	7mm	11611U	11mm	11616U	16mm
117	35mm	11700U	FLUSH								
117	32mm			11705U	5mm	11707U	7mm	11711U	11mm	11716U	16mm
130	45mm	13000U	FLUSH								
130	38mm			13005U	5mm	13007U	7mm	13011U	11mm	13016U	16mm
191	53mm	19100U	FLUSH								
191	48mm			19105U	5mm	19107U	7mm	19111U	11mm	19116U	16mm
Internal Glaze	16mm	112IGU	13mm								
Internal Glaze	9mm	113IGU	13mm								

Universal folding openers are not available in locking or fold aside form. They are however available in releasable form. The above range covers all 110 & 112 style folding openers which are available (114 & 118 styles are not available).

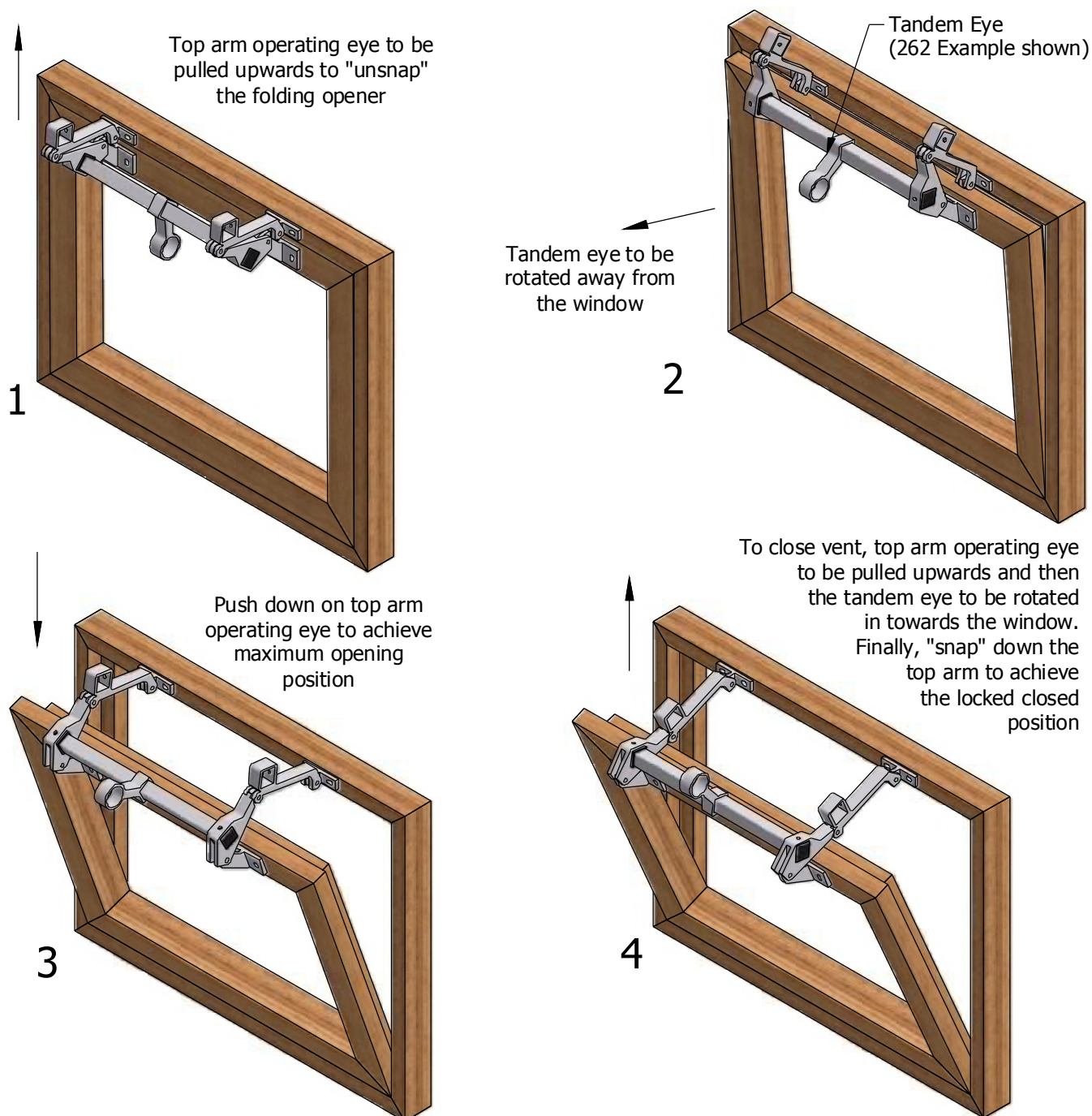
In order to specify a universal folding opener the 112 style reference should be specified with a U suffix.

To specify :- 110/111 type use 112      131 type use 130  
115 type use 116      190 type use 191



Telephone 01789 414044

## OPERATION OF UNIVERSAL FOLDING OPENER SHOWN ON A BOTTOM HUNG "HOPPER" TYPE TIMBER WINDOW



When using universal folding openers on a bottom hung (hopper type) window a minimum of 85mm clearance should be allowed above the top arm. See Data sheet 00076 or Universal folding opener quick reference matrix in the folding opener manual for more details.

All of the information shown on this data sheet was correct at the time of issue. All information however is subject to change and therefore it is advisable to check with Building Profiles to ensure that you have the latest issue level.

## **AVAILABILITY**

Standard Folding Opener products in clear anodised finish are available on a lead-time of 5 working days. Non-standard products such as lockable, foldaside, releasable and quick release in a clear anodised finish are available on a lead-time of 10 working days.

For paint finishes, add a further 6 working days to the lead times given above.

## **APPLICABLE STANDARDS**

Folding Opener Products are a BS EN ISO 9001:2000 accredited quality assurance system and all products supplied are controlled through the manufacturing processes by this system.

The aluminium extrusions used for the key components are produced in accordance with BS1474:1987.

The anodic coatings on the components are all carried out in accordance with BS1615:1987 and will meet the requirements of BS7412:2007 for corrosion protection levels.

## **TESTING**

Each folding opener is tested for function prior to dispatch. Folding Openers have been cycle tested in excess of 100,000 cycles without defect.

## **WARRANTY DETAILS**

All Folding Opener products are warranted free from defects for materials and workmanship for a period of 5 years from date of supply.

## **MAINTENANCE**

Folding Opener products are free from routine maintenance and when installed in accordance with our guidelines should continue to perform for many years without problem. Exposure to atmospheres containing abrasive materials and coastal atmospheres will accelerate wear and tear and regular cleaning with a non-abrasive, pH neutral, cleaning agent is recommended.

## TROUBLESHOOTING

PROBLEM	CAUSE	SOLUTION
Sash won't fully close when folding opener is closed.	Wrong brackets for window step size	Check step size and use correct folding opener part numbers
Sash is fully closed but folding opener is not	Wrong brackets for window step size	Check step size and use correct folding opener part numbers
Folding opener won't lock out in open position.	Sash movement being restricted.	Remove restriction or fit folding opener type with reduced opening characteristics.
Folding opener won't lock out in open position.	Sash height too small (refer to min dimensions in manual)	Use alternative window hardware.
Folding opener fouls on cill board when closing window	Insufficient clearance between folding opener and cill board	Change folding opener to a more suitable type. (contact Building Profiles for advice)
Tandem eye not accessible when window is open	Wrong folding opener type or wrong tandem eye type being used.	Refer to accessories details in manual and replace with correct parts.
Pole operator does not fit Tandem Eyes	Large boss pole operator being used with small boss tandem eye	Use a small boss pole operator.
Folding opener becomes loose after a time in service on a PVCu window.	Fixing screws not engaged into reinforcement.	Use screws of the correct length.
Folding opener hits top of reveal when used on bottom hung sash.	Insufficient clearance.	Use Universal type folding openers and fit to ensure a minimum of 85-mm clearance between folding opener and reveal.